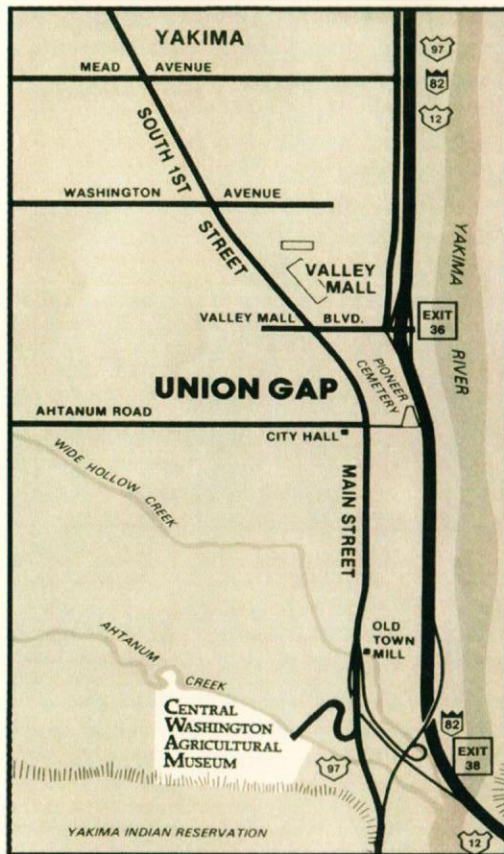


When you visit Old Town, don't miss the Central Washington Agricultural Museum!

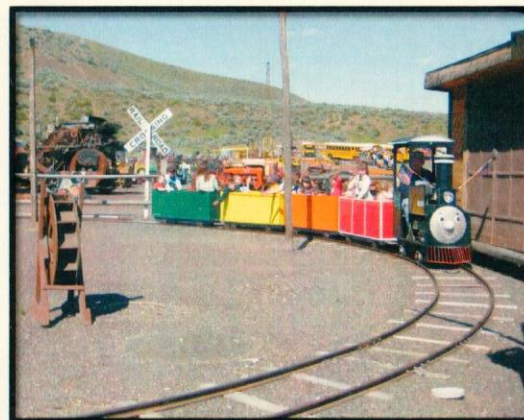


## They tilled, sowed and reaped yesterday's harvest

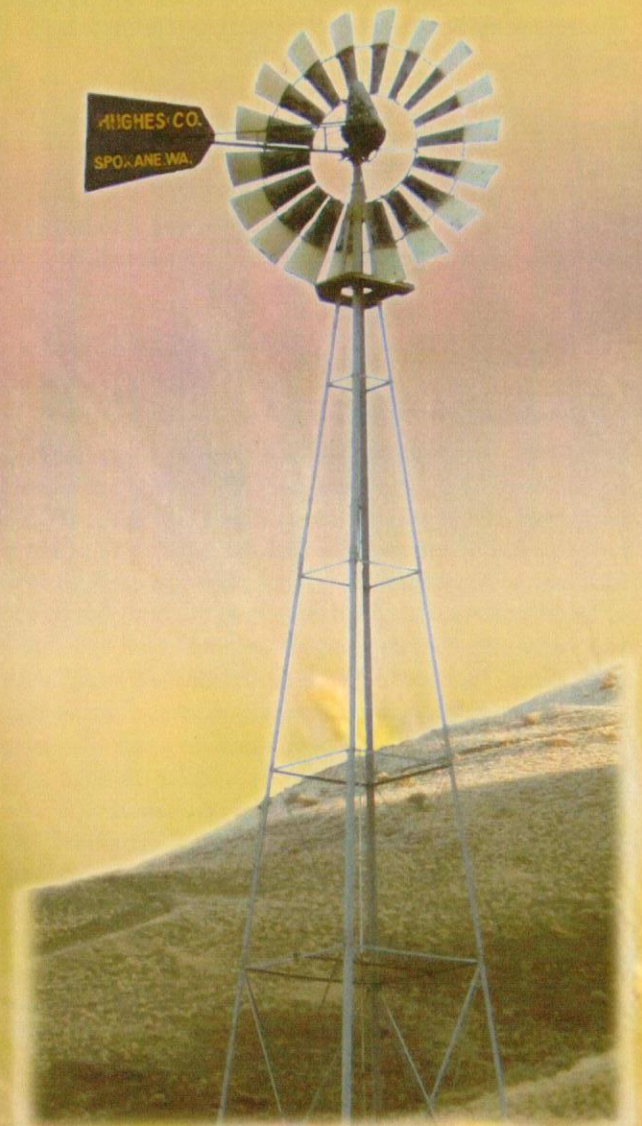
Traveling through Central Washington one soon observes from the surroundings that this part of Washington State is quilted with an abundant pattern of farm lands. This rich environment filled with a bountiful variety of crops has come a long way since the first pioneer planted seeds in the fertile volcanic soil. Central Washington has grown to be recognized as one of the most productive agricultural areas in the nation. From the early use of the horse drawn plow to the highly technical machinery of today, a visual history has been created in the form of farming equipment scattered across the area.

In an effort to preserve the agricultural heritage of the Yakima Valley and Central Washington, the late Ted Falk first introduced the idea of a farm equipment museum to a small group of interested people in November of 1978. The next year the Central Washington Agricultural Museum was founded on March 15, 1979, as a non-profit, tax-exempt organization governed by a Board of Directors with a volunteer staff.

Since the formation of the Central Washington Agricultural Museum, the city council of Union Gap, Washington, generously leased 15 acres in Fullbright Park, which is just south of the city. Here, the museum is constructing semi-open buildings to house displays and exhibits of the numerous items donated by farm families in the Yakima Valley and Central Washington.

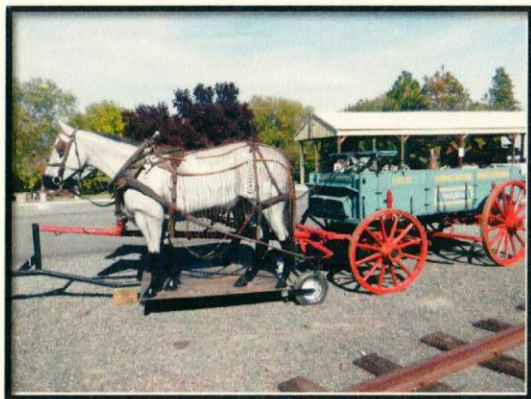


# Central Washington Agricultural Museum

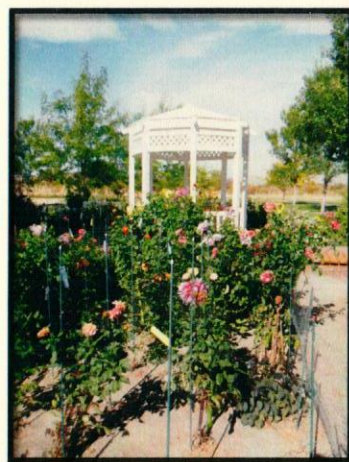


4508 Main Street  
 Union Gap, Washington 98903  
 Located in Fullbright Park  
 (509) 457-8735  
[www.centralwaagmuseum.org](http://www.centralwaagmuseum.org)

This site was a former farm on the south outskirts of the original "Yakima City" incorporated in 1883 and now Union Gap. Union Gap, one of two towns in the State of Washington still operating under a territorial charter of the "Washington Territory", is a fitting location for the Central Washington Agricultural Museum.



Driving south through Union Gap on Main Street to the Highway 97 overpass one can look to the west and see the former 265 acre farm that is now Fullbright Park. On the west end of the park, behind the trees, is the Central Washington Agricultural Museum. The museum displays all facets of farm life. All members of the farm family had responsibilities. Men, women and children each had chores to complete. The museum has many artifacts for each family



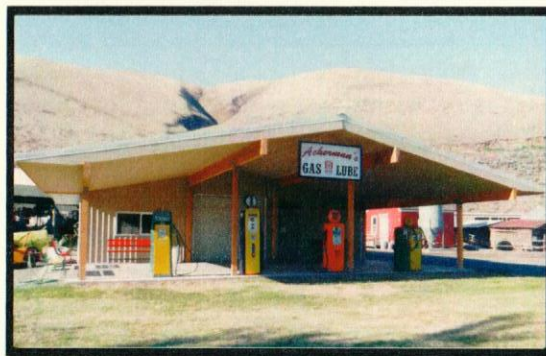
group. Rows of vintage machinery are displayed in a drive through area and the entire 15 acre museum grounds are available for walking tours.

The museum is under continuous development. The public is welcome to visit the site often to observe the progress. You'll see machines and tools that helped pioneers build this area into the

bountiful croplands that exist today. There are classics like a 1930's McCormick Deering tractor, wind machines, harvesting equipment, fully furnished pioneer cabins and a vast collection of horse drawn machinery. It is estimated there are over ten thousand farm related artifacts.

If you are a visitor, or even if you live in Central Washington, this is an educational and historic excursion that shouldn't be missed.

Be sure to visit the Magness Tool Room where you will find a fabulous collection of over 3,000 antique hand tools, a gift from the Mag Magness family. This collection is a true example of tools of the bygone days. The Amos Cabin, Keys Homestead and Weibler Cabin display



many household items of the early 1900's. The 1930's vintage gas station comes complete with several restored gas pumps and numerous filling station artifacts: tools, oil cans, license plates, car jacks and much more. A gazebo surrounded by over 250 varieties of dahlias has become a highlight of summer and fall colors.

Perhaps you can help us by making us aware of farm implements and machinery or other early day items that contributed to the agricultural development of Central Washington. Should you do so, the museum and its visitors would be forever grateful.



#### MUSEUM FEATURES AND EVENTS

- Nature trails through the sagebrush hillside that offers interesting hiking.
- The Central Washington Antique Farm Equipment Exposition the third weekend of August features fabulous displays of antique framing equipment with a parade of machines, operating sawmill, working blacksmith shop, wheat harvesting and threshing, kiddy train rides and much more.
- A drive through display of over 150 farm implements, each with identifying signs and circa dates.
- Union Gap "Old Town Days Celebration" in June, with a parade, civil war encampment and battle reenactments, soccer tournaments, food, wagon tours of the museum and much more.



- Antique and Craft Fair the third weekend of May.
- Guided tours and activities for school groups, retirement home buses and commercial groups.

#### FACILITY USE

The grounds and buildings of the museum are available for use by groups on a scheduled and donation basis. Weddings, reunions, club meetings, company training sessions and customer appreciation events are a few activities that are regularly held at the museum. Facilities available include:

- Visitor Center with full kitchen, audio-visual equipment and seating for up to 60 persons.
- Gazebo and covered picnic shelter for a wide variety of events.
- Museum open spaces for car shows, company equipment displays and large group events.

# CENTRAL WASHINGTON AGRICULTURAL MUSEUM